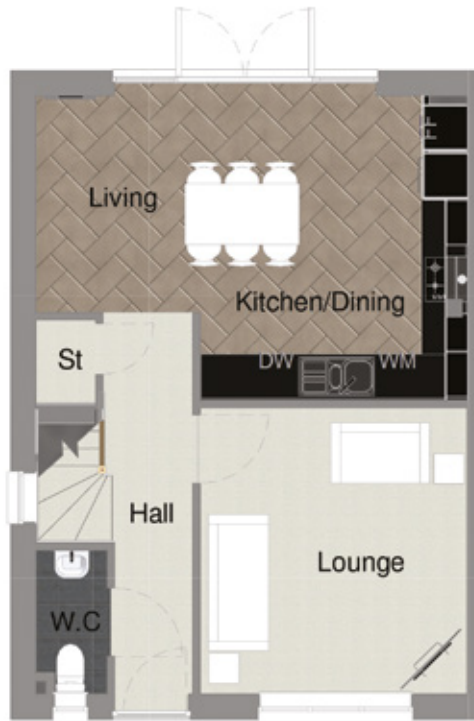


Edendale 3 bedroom home with private, off road parking.

Included as standard



Ground Floor:	Kitchen/living/dining	5.7 x 4.0
Measurements in metres	Hall	2.9 x 2.1 (max)
	Lounge	3.8 x 3.5
	W.C.	1.9 x 0.9
	Storage	1.3 x 0.8



First Floor:	Bathroom	2.1 x 1.9
Measurements in metres	Bedroom 1	3.6 (max) x 3.5
	En-suite	2.0 x 1.5
	Bedroom 2	3.4 (max) x 3.0
	Bedroom 3	3.4 (max) x 2.6
	Storage	0.9 x 0.7